

18th Annual

WHO'S YOUR DADDY

Shorthorn Bull & Female Sale



**THURSDAY, APRIL 1, 2021
1:00 PM
SASKATOON LIVESTOCK SALES**

WHO'S YOUR DADDY 2021 BULL & FEMALE SALE

Thursday, April 1, 2021 - 1:00pm
Saskatoon Livestock Sales - Saskatoon, SK
(5 miles west on Highway #14)

Welcome

Welcome to the 18th Annual Who's Your Daddy" Shorthorn bull sale. In this catalogue you will find 66 thick, easy fleshing Shorthorn bulls. These bulls represent the top cut from over 400 purebred Shorthorn females that are raised under commercial conditions. They are bred to go out and sire cattle that can survive and produce with a minimum of feed and labor, the two biggest costs facing our industry today.

If you have any questions about the offering or unable to attend the sale, feel free to contact the sales staff or consignors and we will be happy to assist you. The bulls will be available for viewing Tuesday and Wednesday.

-Bull Sale Consigners

Delivery: Free delivery to central locations within 300 miles of Saskatoon. Delivery over 300 miles at cost. \$100 off purchase price of your bull if you haul him home sale day. (Bull must be paid for in full in order to receive the discount).

U.S Buyers: A \$300.00 per lot will be applied to your purchase. This will include all necessary vet inspections, health papers, brokerage fees and delivery to the border. We will guarantee that your bull will be eligible to export to the USA or we will refund your purchase price. For our American buyers the U.S. dollar enjoys a premium over the Canadian dollar. Exchange rate will be announced sale day.

Buyer Specific Bull Sale Service: If you are unable to attend the sale we would be more than happy to help select a bull to suit your needs. If you are not happy with the bull upon delivery, we'll load him up and take him home. If you are not happy, we aren't happy.

Buyers Option: Buyers may leave the bulls at the farm at their own risk until May 1, 2021 at no cost. Bulls left at the farm must be insured.

Insurance: Will be available sale day.

SALE STAFF

Michael Fleury – Auctioneer – (306) 370-5022

Harvey Welter – Ringman – (306) 227-8283

Ryan Hurlburt – Ringman – (306) 292-9812

Sale Consultant & Stockman's Insurance

Larry Toner – (306) 834-7652

Internet Bidding Available

DLMS

www.dlms.ca

For more information Call DLMS Reps:

Mark Shologan 780.699.5082

Whitney Bosovich 403-550-7557

BELL M FARMS *The Moellenbeck's*

Box 47 Englefeld, SK. S0K 1N0

Richard's cell 306-287-7904

Russell 306-287-7768

Ryley 306-287-7219

Royce 369-280-7217

Vince 306-287-7789

MURIDALE SHORTHORNS *The Muri's*

Box 4, Site 11, Swift Current, SK. S9H 3X7

Russell's cell 306-741-1727

Scot 306-553-2244

Scot's cell 306-741-6833

Casey 306-677-7102

Tanner 306-677-7755

SASKVALLEY STOCK FARM *The Lehmann's*

Box 566 Rosthern, SK. S0K 3R0

Barry's cell 306-212-0240

Murray's cell 306-232-7131

Carl's cell 306-232-3511

Wes' cell 306-232-7725

2020 BUYERS LIST

Albert Thiessen, Carrott River, SK
Anwender Cattle Co., Radville, SK
Bill & Carol Cline, Young, SK
Studer Shorthorns, Creston, IA, USA
Dan Wheat, Prince George, BC
Don Even, Burke, SD, USA
Eric Lafontaine, Dupuy, QC
Hart Lowenberger, Wynyard, SK
Irl Smith, Helena, MT, USA
Spruceholm Farms, Glenboro, MB
Ken Snider, Guernsey, SK
Les Gusikoski, Viscount, SK
Pic-A-Spot Shorthorns, Spruce Holm, SK
Philip Kornaga, Glen Bain, SK
Hattie Lake Shorthorns, Kinsella, AB
Bender Shorthorns, Neudorf, SK
Muridale Shorthorns, Swift Current, SK
Shadybrook Shorthorns, West Brome, QC
Shane Fielding, Amaranth, MB
Shaun Thompson, Nokomis, SK
Prospect Hill Shorthorns, Meeting Creek, AB
Straws Milan, Cochrane, AB
Airbro Farms, DeBolt, AB
Tom Wallum, Iroquois, SD, USA
Zane Lammers, Perdue, SK
Allan Greenwood, Barrhead, AB
Darrell Stefaniuk, Saskatoon, SK
Don Koberstein, Barrhead, AB
Fallyn Oxley, Preeceville, SK
Jared Martin, Ituna, SK
Meechan Farms, Ottawa, ON
Laurie Vidal, Rapid View, SK
3 of Diamonds Cattle Co., Carnduff, SK
Diamond Creek Cattle Company, Weyburn, SK
Shane Paschke, Garrick, SK
Froggy Farms Ltd., Herschel, SK
Austin Krieger, Jansen, SK
Up The Creek Cattle Co Ltd., Elm Creek, MB

SOCIAL MEDIA



:Bell M Farms
:Muridale Shorthorns
:Saskvalley Shorthorns

**VIDEOS CAN BE FOUND ON EACH FARM'S INDIVIDUAL
FACEBOOK PAGE & WEBSITE**

SASKVALLEY STOCK FARM

The Lehmann's, Rosthern, SK

Once again, we are bringing you a group of bulls that have been bred to perform on grass in the summer and a moderate growing ration in the winter. These bulls have never been pushed for maximum gain. As calves they ate only grass and their mother's milk, NO CREEP. After weaning they were brought up slowly to a ration designed with an energy level of 52 Mcal/cwt NEgain (For frame of reference, we feed our heifer calves a ration that has an energy level of 40 Mcal/cwt NEgain and expect them to gain 1.75 pounds per day. Most feedlots in western Canada feed a fattening ration that is 60 Mcal/cwt NEgain). These bulls were kept on this ration until the end of March when they were slowly brought down to a low energy ration (40 Mcal/cwt NEgain) before being turned onto grass in May. During the summer while grazing grass they received only salt and mineral supplementation. They did not receive any protein or energy supplements. At the end of October, they were slowly brought up to a ration with an energy level of 50 Mcal/cwt NEgain. We are trying to breed cattle that can survive and reproduce with a minimum of labor and feed. All of our bulls are TH free by pedigree. The results of myostatin tests will be available before sale day. Videos of the bulls can be seen on our Facebook page: www.facebook.com/saskvalleyshorthorns/videos

-Saskvalley Stock Farms



lot
1

SASKVALLEY GAVEL 1G

*26623 98.5% February 28, 2019 Roan

Shannon's Todays Headline 89C X - roan

Uphill Headliner 16E X - roan

Uphill Silver Sylvia 6B X - roan

Shannon's Todays Headline 89C X - roan

Uphill Cathy Joyful 24E X - roan

Uphill Cathy Joyful 3B - roan

BW: 82 205-Day Wt: 597 365-Day Wt: 1087 F.S. 5.5

REA: 11.97 FT: 0.23 IMF: 3.468 RF: 0.150 LY: 62.19

Jan. 12 Wt. 1560 - Light birth weight bull out of a first calf heifer we purchased from Ross Gray in the Alliance Sale.

| CE | BW | WW | YW | M | \$CEZ | \$BMI | \$F |
|----|-----|----|----|----|-------|--------|-------|
| 7 | 4.1 | 47 | 75 | 27 | 24.13 | 113.76 | 50.45 |

Dam



lot
2

SASKVALLEY GETAWAY 52G

482321 Polled April 22, 2019 Roan

Saskvalley Ramrod 155R X - red

Saskvalley Connection 405C X - red

JT Heroine 94M X - red

Saskvalley Shadow 320S X - red

Saskvalley Heroine 103A X - roan

Saskvalley Heroine 260S X - roan

BW: 102 205-Day Wt: 636 365-Day Wt: 1200 F.S. 7.0

REA: 14.03 FT: 0.18 IMF: 1.771 RF: 0.162 LY: 66.03

Jan. 12 Wt. 1775 - Performance bull out of a deep bodied, easy
fleshing Shadow daughter.

| CE | BW | WW | YW | M | \$CEZ | \$BMI | \$F |
|----|-----|----|----|----|-------|--------|-------|
| 10 | 3.3 | 58 | 93 | 19 | 28.38 | 121.10 | 54.53 |



lot
3

SASKVALLEY GATEWAY 59G

482292 Polled April 23, 2019 red

Uphill Gussy 24Y X - red

Saskvalley Celebrity 437C X - roan

Saskvalley Raggesy Ann 195U X - roan

Saskvalley Imperial 64X X - red

Saskvalley Sindy 46B X - roan

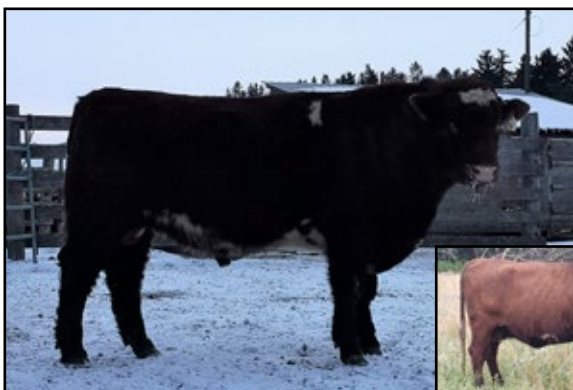
Saskvalley Sindy 2X X - roan

BW: 92 205-Day Wt: 678 365-Day Wt: 1337 F.S. 7.0

REA: 13.37 FT: 0.24 IMF: 2.738 RF: 0.296 LY: 64.32

Jan. 12 Wt. 1830 - Another performance bull with a tremendous
birth to yearling weight spread. Top 1% of the breed for weaning
and yearling weight combined with top 25% of the breed for
calving ease.

| CE | BW | WW | YW | M | \$CEZ | \$BMI | \$F |
|----|-----|----|-----|----|-------|--------|-------|
| 11 | 1.8 | 65 | 103 | 26 | 31.79 | 136.79 | 59.87 |



Dam



lot
4

SASKVALLEY GRIZZLY 62G

482326 Polled April 23, 2019 Roan

Saskvalley Banjo 268B X - white

Saskvalley Emblem 169E X - white

Saskvalley Sindy 219B X - roan

Saskvalley Ramrod 155R X - red

Saskvalley Heroine 262E ET X - red

JT Heroine 94M X - red

BW: 76 205-Day Wt: 565 365-Day Wt: 1021 F.S. 5.25

REA: 12.80 FT: 0.20 IMF: 2.639 RF: 0.159 LY: 64.69

Jan. 12 Wt. 1345 - Light birth weight bull that we used on heifers last year. Top 5% of the breed for birth weight and calving ease. Should be safe to use on heifers.

| CE | BW | WW | YW | M | \$CEZ | \$BMI | \$F |
|----|------|----|----|----|-------|--------|-------|
| 16 | -1.7 | 42 | 62 | 21 | 56.37 | 132.58 | 46.89 |



lot
5

SASKVALLEY GAUCHO 73G ET

482861 Polled April 24, 2019 red

Muridale Master 24M X - red

Saskvalley Ramrod 155R X - red

Saskvalley Darling 70M X - red

Saskvalley Ripper 260R X - rwm

Saskvalley Sindy 42T - roan

Gar-Lind Sindy 31R X - roan

BW: 106 205-Day Wt: 674 365-Day Wt: 1305 F.S. 7.0

REA: 13.18 FT: 0.30 IMF: 2.524 RF: 0.297 LY: 62.72

Jan. 12 Wt. 1745 - Performance bull with tremendous growth and ribeye epd's. Used on cows last year. This is a Ramrod ET son out of the Saskvalley Sindy 42T cow. His full sister is one of our best cows and the dam of 209G (lot 13).

| CE | BW | WW | YW | M | \$CEZ | \$BMI | \$F |
|----|-----|----|-----|----|-------|--------|-------|
| 9 | 2.6 | 69 | 102 | 20 | 25.43 | 140.88 | 59.77 |



Dam



lot
6

SASKVALLEY GIZMO 92G

482291 Polled April 27, 2019 Roan

JT Trans X 28X X - red

Saskvalley Endeavor 206E X - roan

Saskvalley Paprika 262C X - roan

Saskvalley Battery 292B X - roan

Saskvalley Anne 33E X - roan

Saskvalley Anne 128A X - roan

BW: 82 205-Day Wt: 623 365-Day Wt: 1147 F.S. 5.0

REA: 12.58 FT: 0.25 IMF: 2.523 RF: 0.207 LY: 63.50

Jan. 12 Wt. 1550 - The most balanced set of epd's in our offering. Top 25% of the breed in almost every measurable trait. His sire, Endeavor, was the high selling bull in this sale 2 years ago to Bigelow Farms in California. Used on heifers last summer and should be heifer safe.

| CE | BW | WW | YW | M | \$CEZ | \$BMI | \$F |
|----|------|----|----|----|-------|--------|-------|
| 16 | -0.6 | 55 | 87 | 24 | 50.63 | 138.52 | 55.12 |



Dam



lot
7

SASKVALLEY GRIFFIN 96G

482293 Polled April 27, 2019 Roan

Saskvalley Banjo 268B X - white

Saskvalley Emblem 169E X - white

Saskvalley Sindy 219B X - roan

Saskvalley Yellowstone 12Y X - red

Saskvalley Dora 80E X - rwm

Lehne Dora 8Y X - red

BW: 74 205-Day Wt: 594 365-Day Wt: 1034 F.S. 6.0

REA: 11.55 FT: 0.22 IMF: 2.232 RF: 0.234 LY: 63.26

Jan. 12 Wt. 1580 - Another light birth weight bull that should be safe for heifers. Top 2% of the breed for birth weight and calving ease. Used on heifers last year.

| CE | BW | WW | YW | M | \$CEZ | \$BMI | \$F |
|----|------|----|----|----|-------|--------|-------|
| 17 | -2.2 | 40 | 60 | 24 | 58.36 | 129.41 | 46.10 |



lot
8

SASKVALLEY GUARDIAN 103G

482295 Polled April 27, 2019 Red

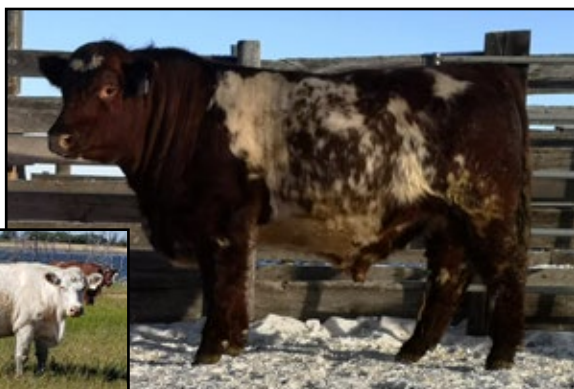
Saskvalley Ramrod 155R X - red
Saskvalley Connection 405C X - red
 JT Heroine 94M X - red

Saskvalley Banjo 268B X - white
Saskvalley Flower 96D X - roan
 Saskvalley Flower 96A X - rwm

BW: 84 205-Day Wt: 547 365-Day Wt: 1060 F.S. 5.25
REA: 11.86 FT: 0.21 IMF: 2.406 RF: 0.295 LY: 63.96

Jan. 12 Wt. 1510 - Light birth weight bull with plenty of performance.
 This guy is full of muscle and really has that herd bull look in his head and crest.

| CE | BW | WW | YW | M | \$CEZ | \$BMI | \$F |
|----|-----|----|----|----|-------|--------|-------|
| 10 | 1.7 | 47 | 75 | 17 | 33.05 | 107.81 | 48.99 |



lot
9

SASKVALLEY GENUINE 125G

482324 Polled April 28, 2019 roan

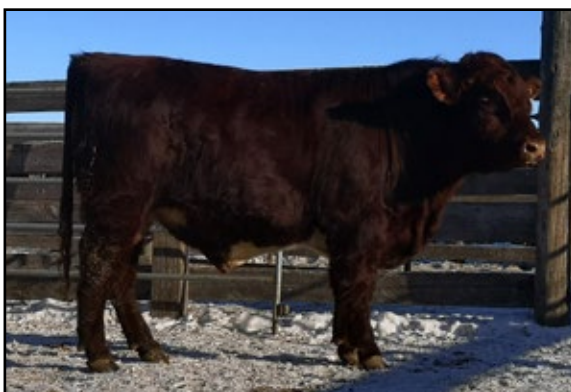
JT Trans X 28X X - red
Saskvalley Endeavor 206E X - roan
 Saskvalley Paprika 262C X - roan

Saskvalley Banjo 268B X - white
Saskvalley Patsy 226E X - white
 Saskvalley Patsy 260B X - roan

BW: 82 205-Day Wt: 592 365-Day Wt: 1122 F.S. 5.75
REA: 13.29 FT: 0.30 IMF: 2.416 RF: 0.207 LY: 62.80

Jan. 12 Wt. 1660 - Another Endeavor son with a nicely balanced set of epd's. Top 10% of the breed for birth weight and calving ease. Should be heifer safe.

| CE | BW | WW | YW | M | \$CEZ | \$BMI | \$F |
|----|------|----|----|----|-------|--------|-------|
| 15 | -0.3 | 45 | 72 | 27 | 50.99 | 130.29 | 49.66 |



^{lot}
10

SASKVALLEY GAZOO 142G

482296 Polled April 29, 2019 RWM

Uphill Gussy 24Y X - roan

Saskvalley Celebrity 437C X - Roan

Saskvalley Raggedy Ann 195U X - roan

Eionmor Ideal 9W X - red

Eionmor Smash Hit 54A X - red

Downsview Smash Hit 19R X - red

BW: 86 205-Day Wt: 623 365-Day Wt: 1096 F.S. 6.0

REA: 11.61 FT: 0.30 IMF: 2.766 RF: 0.300 LY: 61.57

Jan. 12 Wt. 1660 - Light birth weight bull with plenty of performance.

He is out of a cow we purchased in the Eionmor dispersal. She produced the high seller in this sale 4 years ago.



| CE | BW | WW | YW | M | \$CEZ | \$BMI | \$F |
|----|-----|----|----|----|-------|--------|-------|
| 11 | 1.9 | 46 | 65 | 31 | 38.39 | 131.80 | 51.48 |



^{lot}
11

SASKVALLEY GRINCH 143G

482325 Polled April 29, 2019 Roan

Saskvalley Ramrod 155R X - red

Saskvalley Connection 405C X - red

JT Heroine 94M X - red

Saskvalley Navajo 153M X - roan

Saskvalley Raggedy Ann 195U X - roan

Saskvalley Raggedy Ann 134K X - red

BW: 82 205-Day Wt: 604 365-Day Wt: 1077 F.S. 6.5

REA: 13.11 FT: 0.30 IMF: 2.513 RF: 0.249 LY: 62.65

Jan. 12 Wt. 1665 - Quality bull out of a 10 year old Navajo daughter.

| CE | BW | WW | YW | M | \$CEZ | \$BMI | \$F |
|----|-----|----|----|----|-------|--------|-------|
| 10 | 2.4 | 54 | 76 | 22 | 33.16 | 133.46 | 52.95 |



lot 12 SASKVALLEY GATOR 149G ET

482863 Polled April 29, 2019 Red

Muridale Master 24M X - red

Saskvalley Ramrod 155R X - red

Saskvalley Darling 70M X - red

Saskvalley Ultra 12J X - roan

Saskvalley Daisy 186R X - red

Saskvalley Daisy 58J X - roan

BW: 104 205-Day Wt: 597 365-Day Wt: 1132 F.S. 6.75

REA: 14.12 FT: 0.18 IMF: 2.910 RF: 0.191 LY: 66.28

Jan. 12 Wt. 1740 - Another Ramrod ET son out of the Saskvalley Daisy 186R cow. We have used 1 maternal and 2 full brothers in our purebred herd. Top 1% of the breed for ribeye.



| CE | BW | WW | YW | M | \$CEZ | \$BMI | \$F |
|----|-----|----|----|----|-------|--------|-------|
| 5 | 4.3 | 51 | 79 | 17 | 17.28 | 115.86 | 51.81 |



lot 13 SASKVALLEY GRINGO 209G

482299 Polled May 5, 2019 White

Saskvalley Ultra 12J X - roan

ACC Delton 26D X - white

ACC Fairest Faye 14Z X - roan

Saskvalley Ramrod 155R X - red

Saskvalley Sindy 62Z X - roan

Saskvalley Sindy 42T - roan

BW: 96 205-Day Wt: 597 365-Day Wt: 1138 F.S. 6.0

REA: 14.02 FT: 0.31 IMF: 2.239 RF: 0.250 LY: 63.23

Jan. 12 Wt. 1540 - Nicely balanced set of epd's here. This bulls full brother sold to Studer Shorthorns in Iowa in last years sale. His dam is as good a cow as we own.

| CE | BW | WW | YW | M | \$CEZ | \$BMI | \$F |
|----|-----|----|----|----|-------|--------|-------|
| 11 | 1.5 | 51 | 76 | 24 | 35.60 | 128.41 | 51.52 |



^{lot}
14

SASKVALLEY GALAXY 212G

482300 Polled May 5, 2019 Roan

Saskvalley Ultra 12J X - roan

ACC Delton 26D X - white

ACC Fairest Faye 14Z X - roan

Saskvalley Sequel 59S X - rwm

Saskvalley Raggedy Ann 94X X - rwm

Saskvalley Raggedy Ann 163N X - roan

BW: 102 205-Day Wt: 649 365-Day Wt: 1105 F.S. 5.5

REA: 13.31 FT: 0.20 IMF: 3.075 RF: 0.249 LY: 65.38

Jan. 12 Wt. 1610 - Performance bull with lots of eye appeal.

| CE | BW | WW | YW | M | \$CEZ | \$BMI | \$F |
|----|-----|----|----|----|-------|--------|-------|
| 6 | 4.0 | 49 | 71 | 24 | 22.55 | 122.96 | 51.15 |



^{lot}
15

SASKVALLEY GONG 225G

482314 Polled May 6, 2019 roan

Saskvalley Ultra 12J X - roan

ACC Delton 26D X - white

ACC Fairest Faye 14Z X - roan

Saskvalley Imperial 64X X - red

Saskvalley Myrtle 157D X - red

Saskvalley Myrtle 160X X - rwm

BW: 82 205-Day Wt: 545 365-Day Wt: 1024 F.S. 5.0

REA: 12.78 FT: 0.21 IMF: 3.292 RF: 0.246 LY: 64.78

Jan. 12 Wt. 1380 - Light birth weight bull. Used on heifers last year and should be heifer safe.

| CE | BW | WW | YW | M | \$CEZ | \$BMI | \$F |
|----|-----|----|----|----|-------|--------|-------|
| 11 | 0.4 | 36 | 54 | 22 | 39.19 | 112.71 | 45.73 |



lot
16

SASKVALLEY GLAZE 234G

482278 Polled May 7, 2019 Red

Saskvalley Yosemite Sam 3Y X - roan
Saskvalley Distinction 195D X - rwm
 Saskvalley Daisy 186R X - red

Muridale Briggs 25W X - red
Saskvalley Mollie 5Y X - red
 Muridale Mollie 5W X - red

BW: 92 205-Day Wt: 639 365-Day Wt: 1112 F.S. 5.5
REA: 12.34 FT: 0.28 IMF: 3.778 RF: 0.312 LY: 62.73

Jan. 12 Wt. 1450 - Red, polled and thick with a moderate birth weight. Used on cows last year. His dam is 10 years old, has weaned a calf every year, and is still going strong. She looks like a 4 year old cow with a perfect udder.

| CE | BW | WW | YW | M | \$CEZ | \$BMI | \$F |
|----|-----|----|----|----|-------|--------|-------|
| 8 | 2.1 | 45 | 65 | 21 | 28.35 | 110.11 | 50.06 |



lot
17

SASKVALLEY GRANITE 237G

482316 Polled May 7, 2019 red

Saskvalley Yosemite Sam 3Y X - roan
Saskvalley Distinction 195D X - rwm
 Saskvalley Daisy 186R X - red

Saskvalley Apollo 34A X - roan
Saskvalley Brenda 112C X - red
 Saskvalley Brenda 83A X - red

BW: 84 205-Day Wt: 652 365-Day Wt: 1097 F.S. 5.5
REA: 12.63 FT: 0.32 IMF: 3.623 RF: 0.251 LY: 61.98

Jan. 12 Wt. 1570 - Red, polled and thick with a light birth weight and balanced epd's. This bulls dam looks like she is going to be a herd bull maker. She is moderate framed and easy fleshing with a perfect udder. I wish we had 500 just like her.

| CE | BW | WW | YW | M | \$CEZ | \$BMI | \$F |
|----|-----|----|----|----|-------|--------|-------|
| 10 | 1.1 | 50 | 73 | 26 | 35.84 | 126.53 | 51.79 |



lot
18

SASKVALLEY GAMBLER 266G

482313 Polled May 9, 2019 Roan

Saskvalley Ultra 12J X - roan

ACC Delton 26D X - white

ACC Fairest Faye 14Z X - roan

Saskvalley Volcano 57U X - roan

Saskvalley Myrtle 155X X - roan

Saskvalley Myrtle 19U X - red

BW: 86 205-Day Wt: 629 365-Day Wt: 1097 F.S. 5.5

REA: 14.56 FT: 0.3 IMF: 2.897 RF: 0.204 LY: 63.83

Jan. 12 Wt. 1525 - Light birth weight with good performance and excellent carcass traits. Top 15% of the breed for ribeye AND marbling. Dam is a big, thick 11 year old Volcano daughter who is about to drop her 10th calf this spring.

| CE | BW | WW | YW | M | \$CEZ | \$BMI | \$F |
|----|-----|----|----|----|-------|--------|-------|
| 13 | 0.2 | 42 | 62 | 24 | 46.75 | 130.22 | 50.19 |



Dam



lot
19

SASKVALLEY GUMP 285G

482332 Polled May 10, 2019 white

Saskvalley Banjo 268B X - white

Saskvalley Emblem 169E X - white

Saskvalley Sindy 219B X - roan

JT Trans X 28X X - red

Saskvalley Jenny 289E X - roan

Saskvalley Jenny 45C X - roan

BW: 78 205-Day Wt: 566 365-Day Wt: 1096 F.S. 5.5

REA: 12.45 FT: 0.25 IMF: 3.783 RF: 0.293 LY: 63.52

Jan. 12 Wt. 1460 - Light birth weight bull that we used on heifers last year. Top 2% of the breed for birth weight and calving ease. Should be safe to use on heifers.

| CE | BW | WW | YW | M | \$CEZ | \$BMI | \$F |
|----|------|----|----|----|-------|--------|-------|
| 19 | -2.1 | 40 | 65 | 25 | 66.48 | 133.06 | 48.79 |



lot
20

SASKVALLEY GLOBAL 298G

482287 Polled May 11, 2019 Roan

Saskvalley Ultra 12J X - roan

ACC Delton 26D X - white

ACC Fairest Faye 14Z X - roan

Saskvalley Yosemite Sam 3Y X - roan

Saskvalley Sindy 24C X - rwm

Saskvalley Sindy 2X X - roan

BW: 92 205-Day Wt: 603 365-Day Wt: 1099 F.S. 5.75

REA: 12.99 FT: 0.31 IMF: 2.587 RF: 0.276 LY: 62.68

Jan. 12 Wt. 1600 - Moderate birth weight eith plenty of performance.
This is one that catches your eye every time you walk through the group.

| CE | BW | WW | YW | M | \$CEZ | \$BMI | \$F |
|----|-----|----|----|----|-------|--------|-------|
| 9 | 1.8 | 44 | 66 | 24 | 30.44 | 110.61 | 48.66 |



lot
21

SASKVALLEY GUMBALL 313G

482345 Polled May 13, 2019 roan

Saskvalley Ultra 12J X - roan

Saskvalley Delton 26D X - white

ACC Fairest Faye 14Z X - roan

Saskvalley Youngblood 93Y X - red

Saskvalley Rose 398D X - red

Saskvalley Rose 43W X - roan

BW: 102 205-Day Wt: 631 365-Day Wt: 1110 F.S. 6.0

REA: 15.52 FT: 0.24 IMF: 2.688 RF: 0.139 LY: 66.18

Jan. 12 Wt. 1690 - Thick, deep bodied Delton son. Top 3% of the breed for ribeye.

| CE | BW | WW | YW | M | \$CEZ | \$BMI | \$F |
|----|-----|----|----|----|-------|--------|-------|
| 6 | 4.7 | 49 | 70 | 24 | 20.73 | 123.74 | 51.02 |



Dam

^{lot}
22

SASKVALLEY GEYSER 342G

482280 Polled May 16, 2019 Roan

Saskvalley Ultra 12J X - roan

ACC Delton 26D X - white

ACC Fairest Faye 14Z X - roan

Saskvalley Yosemite Sam 3Y X - roan

Saskvalley Raggedy Ann 2 12D X - red

Saskvalley Raggedy Ann 94X X - rwm

BW: 90 205-Day Wt: 566 365-Day Wt: 1079 F.S. 5.0

REA: 12.24 FT: 0.32 IMF: 2.870 RF: 0.192 LY: 61.86

Jan. 12 Wt. 1490 - Moderate birth weight with plenty of performance.

This bulls dam is another cow you could build a herd around.

| CE | BW | WW | YW | M | \$CEZ | \$BMI | \$F |
|----|-----|----|----|----|-------|--------|-------|
| 6 | 2.7 | 42 | 66 | 22 | 22.92 | 101.14 | 48.10 |



^{lot}
23

SASKVALLEY GLORY 343G

482339 Polled May 16, 2019 RWM

Saskvalley Youngblood 93Y X - red

Saskvalley Dynamite 258D X - red

Saskvalley Patsy 38Z - rwm

Saskvalley Yosemite Same 3Y X - red

Saskvalley Raggedy Ann 239B X - rwm

Saskvalley Raggedy Ann 94X X - rwm

BW: 102 205-Day Wt: 605 365-Day Wt: 1045 F.S. 6.0

REA: 13.54 FT: 0.28 IMF: 3.598 RF: 0.262 LY: 63.76

Jan. 12 Wt. 1600 - Thick, deep bodied Dynamite son.

| CE | BW | WW | YW | M | \$CEZ | \$BMI | \$F |
|----|-----|----|----|----|-------|--------|-------|
| 5 | 4.2 | 47 | 71 | 21 | 16.20 | 110.51 | 50.49 |



lot
24

SASKVALLEY GIGOLO 355G

482340 Polled May 18, 2019 roan

Saskvalley Banjo 268B X - white

Saskvalley Emblem 169E X - white

Saskvalley Sindy 219B X - roan

Saskvalley Yellowstone 12Y X - red

Saskvalley Smash Hit 294E X - red

Eionmor Smash Hit 54A X - red

BW: 86 205-Day Wt: 617 365-Day Wt: 1085 F.S. 5.5

REA: 12.06 FT: 0.20 IMF: 2.778 RF: 0.254 LY: 64.61

Jan. 12 Wt. 1590 - Light birth weight son of Saskvalley Emblem.

| CE | BW | WW | YW | M | \$CEZ | \$BMI | \$F |
|----|-----|----|----|----|-------|--------|-------|
| 8 | 0.0 | 46 | 69 | 27 | 26.88 | 113.16 | 48.80 |



lot
25

SASKVALLEY GUARD 357G

482341 Polled May 18, 2019 Roan

Saskvalley Youngblood 93Y X - red

Saskvalley Dynamite 258D X - red

Saskvalley Patsy 38Z - rwm

Saskvalley Yellowstone 12Y X - red

Saskvalley Heroine 163C X - roan

Saskvalley Heroine 86X X - roan

BW: 96 205-Day Wt: 599 365-Day Wt: 1078 F.S. 6.75

REA: 12.68 FT: 0.24 IMF: 2.765 RF: 0.195 LY: 64.32

Jan. 12 Wt. 1755 - Another Dynamite son who is as deep and thick as any bull in our offering. Dynamite sired the high seller in last falls Alliance sale.

| CE | BW | WW | YW | M | \$CEZ | \$BMI | \$F |
|----|-----|----|----|----|-------|--------|-------|
| 9 | 1.8 | 48 | 74 | 20 | 30.01 | 119.62 | 50.58 |



^{lot}
26

SASKVALLEY GUSTO 396G

482286 Polled May 25, 2019 roan

Saskvalley Yosemite Sam 3Y X - red

Saskvalley Distinction 195D X - rwm

Saskvalley Daisy 186R X - rwm

Saskvalley Ultra 12J X - roan

Saskvalley Genda 42Z X - roan

Gar-Lind Genda 50N X - rwm

BW: 88 205-Day Wt: 626 365-Day Wt: 1004 F.S. 5.25

REA: 10.75 FT: 0.36 IMF: 2.992 RF: 0.312 LY: 59.97

Jan. 12 Wt. 1375 - Light birth weight bull whose dam is an own daughter of Saskvalley Ultra 12J.

| CE | BW | WW | YW | M | \$CEZ | \$BMI | \$F |
|----|-----|----|----|----|-------|--------|-------|
| 10 | 0.7 | 38 | 52 | 25 | 38.43 | 115.24 | 46.38 |



^{lot}
27

SASKVALLEY GEARBOX 449G

482283 Polled June 13, 2019 Red

Saskvalley Youngblood 93Y X - red

Saskvalley Dynamite 258D X - red

Saskvalley Patsy 38Z - rwm

Saskvalley Ramrod 155R X - red

Saskvalley Jennie 11Y X - rwm

Saskvalley Jennie 271N X - rwm

BW: 100 205-Day Wt: 622 365-Day Wt: 1118 F.S. 6.0

REA: 14.23 FT: 0.34 IMF: 2.205 RF: 0.308 LY: 63.67

Jan. 12 Wt. 1560 - Performance bull out of a quality Ramrod daughter. Top 10% of the breed for weaning and yearling weight. Also top 10% of the breed for ribeye.

| CE | BW | WW | YW | M | \$CEZ | \$BMI | \$F |
|----|-----|----|----|----|-------|--------|-------|
| 6 | 3.1 | 58 | 89 | 21 | 16.61 | 120.43 | 54.69 |

REFERENCE SIRES



SASKVALLEY DISTINCTION 195D



ACC DELTON 26D



SASKVALLEY DYNAMITE 258D

BELL M FARMS

The Moellenbeck's, Englefeld SK

Building Better Beef is what this industry is all about. Here at Bell M Farms, only 20% of our bull calves are retained as bulls. They are selected on size, quality, feet, legs, testicles, color and disposition. These bulls are grown out on a high roughage (straw), grain and a 32% beef supplement mixture along with a limited amount of hay. Remember grown out, not fattened. These bulls will be able to serve a large number of females for you to help Build Better Beef. As with all the bulls born at Bell M Farms #1 you have to be born unassisted to make the first hurdle to keep your nuts. Then we start looking at birth weight (they get weighed with a scale. No tape or eyeballing) structure, horns, color, performance, disposition, etc.

We have also taken the approach of 'if you can measure it, record it'. This is all in an attempt to provide you, our customer, the most information possible. We do things like weighing the cowherd, it's an interesting task as we are often asked 'what size is their mother'. Studies show a cow should easily have a calf 7% of their body weight. Thus, a 1500 lb cow should be able to deliver a 105 lb calf. We are more concerned about calving ease than birthweight. Our cows are also udder scored and recorded to the CSA Registry.

Building Better Beef is our goal.

-Bell M Farms



lot
28

BELL M AFFINITY 35H

483285 Polled February 18, 2020 Red

Red Rose Gold Spear Ruffian X - roan

Bell M Martin 11Y X - rwm

Bell M Melissa 68S X - red

JSF Forever 208X X - red

Bell M Talcott Joyful 6B X - red

Bell M Talcott Joyful 28Z - roan

BW: 92 205-Day Wt: 568 365-Day Wt: 1026 F.S. 4.6

REA: 11.30 FT: 0.45 IMF: 3.010 RF: 0.410 LY: 57.21

Affinity is a soft made Martin son that expressed exceptional bull characteristics at a very young age. His dam is a Forever daughter that never misses. A full brother sold to Joel Abraham a few years ago. All performance ratio's are above 100 and highlighted by a 162.0 in fat thickness. 35H may be the best Martin son yet.

| CE | BW | WW | YW | M | \$CEZ | \$BMI | \$F |
|----|------|----|----|----|-------|--------|-------|
| 15 | -0.1 | 42 | 66 | 29 | 51.88 | 134.94 | 50.11 |



lot
29

GAR-LIND CAPTAIN 10H

483225 Horned February 25, 2020 Roan

Bell M Foreman 30A X - white

Bell M Captain 139D X - roan

Bell M Mysterious Majorette X - red

Glenford Universal 13A X - red

Bell M Kathryn 10C X - roan

Bell M Kathrym 113A X - roan

BW: 101 205-Day Wt: 598 365-Day Wt: 1093 F.S. 6.2

REA: 10.29 FT: 0.28 IMF: 2.718 RF: 0.359 LY: 60.77

A full brother to lot 34, Captain 10H is an exceptionally sound roan bull that will work well at producing maternal longevity.

| CE | BW | WW | YW | M | \$CEZ | \$BMI | \$F |
|----|-----|----|----|----|-------|--------|-------|
| 8 | 3.8 | 54 | 78 | 28 | 25.04 | 133.35 | 55.18 |



lot
30

BELL M HELMSMAN 87H

483251 Polled March 9, 2020 Red

Bell M Foreman 30A X - white

Bell M Captain 139D X - roan

Bell M Mysterious Majorette X - red

Clythe Mane Boomer 11B X - red

Bell M Ella 5E X - roan

Bell M Ella 115C X - roan

BW: 86 205-Day Wt: 634 365-Day Wt: 1050 F.S. 5.2

REA: 10.63 FT: 0.22 IMF: 2.605 RF: 0.352 LY: 62.61

Helmsman is a red Captain son that was raised by Ella 5E, an up and coming star cow. 87H always caught people's eyes out on pasture this summer.

| CE | BW | WW | YW | M | \$CEZ | \$BMI | \$F |
|----|-----|----|----|----|-------|--------|-------|
| 8 | 1.8 | 50 | 73 | 27 | 27.79 | 126.98 | 53.53 |



lot
31

BELL M BOATMAN 69G

482793 Polled March 7, 2019 Red

Bell M Foreman 30A X - white

Bell M Captain 139D X - roan

Bell M Mysterious Majorette X - red

Saskvalley Vision 535U X - roan

Bell M Kathryn 154C X - roan

Bell M Kathryn 145S X - red

BW: 105 205-Day Wt: 556 365-Day Wt: 1110 F.S. 6.8

REA: 10.22 FT: 0.19 IMF: 2.378 RF: 0.211 LY: 63.05

69G is a large framed, powerful red bull that will work well on a large group of cows. Boatman carries nicely through his top down to his chest floor. He'll add pounds to his calves.

| CE | BW | WW | YW | M | \$CEZ | \$BMI | \$F |
|----|-----|----|----|----|-------|--------|-------|
| 5 | 5.4 | 51 | 79 | 24 | 14.82 | 108.25 | 54.13 |



lot
32

BELL M CONSPIRACY THEORY 86G

*27090 98.4% Polled March 13, 2019 Red

Bell M Foreman 30A X - white

Bell M Captain 139D X - roan

Bell M Mysterious Majorette X - red

JSF Capiche 46U X - roan

Glenrothes Rosewood 10A X - rwm

Glenrothes Rena Rosewood 1X X - rwm

BW: 101 205-Day Wt: 551 365-Day Wt: 1017 F.S. 6.6

REA: 10.99 FT: 0.22 IMF: 2.576 RF: 0.277 LY: 63.07

We thought highly enough of this bull to use on our late calving cows last year and he was successful at bringing their calving window ahead. 86G is a very attractive bull with exceptional muscling.

GGP
100K

| CE | BW | WW | YW | M | \$CEZ | \$BMI | \$F |
|----|-----|----|----|----|-------|--------|-------|
| 5 | 1.2 | 34 | 44 | 25 | 23.47 | 112.92 | 47.94 |



^{lot}
33

BELL M NO DEBATE 167G

482809 Polled April 10, 2019 Roan

Bell M Foreman 30A X - white

Bell M Captain 139D X - roan

Bell M Mysterious Majorette X - red

Saskvalley Wampum 254W X - rwm

River Acres Cathy Joyful 14A X - red

River Acres Cathy Joyful 53W X - red

BW: 87 205-Day Wt: 529 365-Day Wt: 1018 F.S. 5.3

REA: 9.09 FT: 0.33 IMF: 2.607 RF: 0.435 LY: 59.71

A smaller framed Captain son that goes back to Wampum 254W who gave the late Earl McCorrston great females.

| CE | BW | WW | YW | M | \$CEZ | \$BMI | \$F |
|----|-----|----|----|----|-------|--------|-------|
| 7 | 4.1 | 47 | 75 | 27 | 24.13 | 113.76 | 50.45 |



^{lot}
34

GAR-LIND CAPTAIN 10G

482821 Horned March 4, 2019 Red

Bell M Foreman 30A X - white

Bell M Captain 139D X - roan

Bell M Mysterious Majorette X - red

Glenford Univeral 10B X - red

Bell M Kathryn 10C X - roan

Bell M Kathryn 113C X - roan

BW: 100 205-Day Wt: 630 365-Day Wt: 1000 F.S. 6.7

REA: 10.16 FT: 0.25 IMF: 3.416 RF: 0.346 LY: 61.60

We put horn weights on 10G last summer with the plans of exhibiting this past fall. "Spikey" is a very gentle mannered bull that is the quiet boss of the Two-Year old pen. Full brother to lot 29.

| CE | BW | WW | YW | M | \$CEZ | \$BMI | \$F |
|----|-----|----|----|----|-------|--------|-------|
| 7 | 4.7 | 57 | 83 | 28 | 20.48 | 133.31 | 56.50 |



lot
35

BELL M EMPEROR 172G

482812 Polled April 17, 2019 RWM

JSF Wall Street 106C ET X - red

JSF Wall Street 70E X - roan

JSF Marigold Maria 41B X - roan

Bell M Detail 130A X - roan

Bell M Princess Charlotte 35C X - rwm

Uphill Princess 9A X - red

BW: 78 205-Day Wt: 602 365-Day Wt: 1063 F.S. 5.7

REA: 12.10 FT: 0.25 IMF: 2.535 RF: 0.367 LY: 63.99

The Emperor is here and here with authority. 172G is an updated version of Wall Street. He is the longest bull in our offering and is a maternal brother to Bell M Royal Navy 180F. 13 out of 16 of his EPD figures are in the top 20% or higher. Top 2% CED, 1% Milk, 4% TM, 3% CEM, 1% REA, 3% \$CEZ, 1% \$BMI. With a 160.74 \$BMI he is 5th Highest \$BMI scoring bull in the entire Canadian Shorthorn Registry. Calving Ease+Carass+Profitability+Maternal+Phenotype=172G

GGP
100K

| CE | BW | WW | YW | M | \$CEZ | \$BMI | \$F |
|----|-----|----|----|----|-------|--------|-------|
| 17 | 0.3 | 48 | 68 | 33 | 58.18 | 160.74 | 53.37 |



115Ht & Dam



lot
36

BELL M ADVISER 115H

483265 Polled March 18, 2020 Red

JSF Wall Street 106C ET X - red

JSF Wall Street 70E X - roan

JSF Marigold Maria 41B X - roan

Clythe Mane Boomer 11B X - red

Bell M Marion 12E X - red

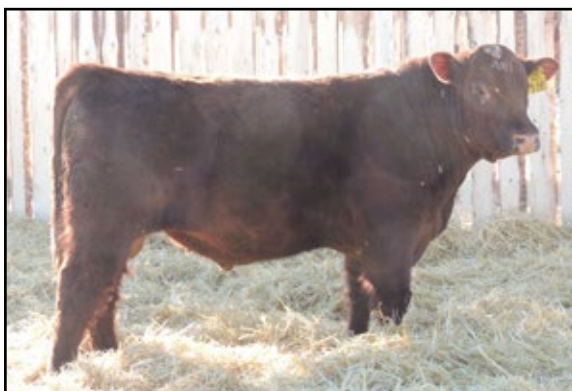
Bell M Marion 123C X - red

BW: 82 205-Day Wt: 562 365-Day Wt: 975 F.S. 4.5

REA: 11.77 FT: 0.28 IMF: 2.408 RF: 0.345 LY: 62.37

We were on the fence of maybing keeping this bull back for next year, but he is so impressive that we are offering him this year. Full Brother to Bell M Fremont 16G, purchased by Megan Turton of Carnduff SK. You could wear out a pickup truck looking for a red heifer bull like him.

| CE | BW | WW | YW | M | \$CEZ | \$BMI | \$F |
|----|------|----|----|----|-------|--------|-------|
| 16 | -1.3 | 42 | 60 | 31 | 58.07 | 147.74 | 50.51 |



^{lot}
37

BELL M AUTO STEER 4H

483250 Polled January 25, 2020 Red

JT Trans X 28X X - red

Saskvalley Eighteen Wheeler X - roan

Saskvalley Mistress 65C X - roan

Bell M Martin 11Y X - rwm

Bell M Lea 56F X - red

Bell M Lea 107Y X - red

BW: 71 205-Day Wt: 573 365-Day Wt: 1016 F.S. 5.1

REA: 10.81 FT: 0.33 IMF: 2.552 RF: 0.262 LY: 59.25

A light birthweight son out of our main heifer bull, Eighteen Wheeler. Wheeler calves come out nice and are vigrous. Note Martin 11Y on the bottom side, Auto-Steer will become your automatic heifer bull.

| CE | BW | WW | YW | M | \$CEZ | \$BMI | \$F |
|----|------|----|----|----|-------|--------|-------|
| 17 | -1.6 | 40 | 60 | 24 | 58.40 | 128.81 | 48.24 |



^{lot}
38

BELL M KENWORTH 7H

483252 Polled January 29, 2020 Red

JT Trans X 28X X - red

Saskvalley Eighteen Wheeler X - roan

Saskvalley Mistress 65C X - roan

3BC Happy Days 1594 X - roan

Bell M Joyous Jade 5F X - roan

Bell M Joyous Jade 67A X - rwm

BW: 87 205-Day Wt: 593 365-Day Wt: 1085 F.S. 4.6

REA: 10.52 FT: 0.23 IMF: 2.309 RF: 0.284 LY: 61.45

Here is a deep red Wheeler son that carries great body depth. The Joyous Jade line is known for their exceptional udder suspension and teat length.

| CE | BW | WW | YW | M | \$CEZ | \$BMI | \$F |
|----|------|----|----|----|-------|--------|-------|
| 16 | -0.7 | 42 | 66 | 26 | 54.65 | 130.91 | 49.25 |



lot
39

BELL M CONVOY 8H

483273 Polled January 29, 2020 Red

JT Trans X 28X X - red

Saskvalley Eighteen Wheeler X - roan

Saskvalley Mistress 65C X - roan

3BC Happy Days 1594 X - roan

Bell M Brook's Binnie 171F X - red

Bell M Brooks Binnie 53A X - red

BW: 73 205-Day Wt: 572 365-Day Wt: 971 F.S. 4

REA: 10.56 FT: 0.22 IMF: 2.102 RF: 0.247 LY: 61.93

A 3/4 brother to lot 38, Convoy is a bull that will do exceptional on heifers

| CE | BW | WW | YW | M | \$CEZ | \$BMI | \$F |
|----|------|----|----|----|-------|--------|-------|
| 15 | -0.7 | 42 | 65 | 25 | 51.83 | 128.29 | 49.20 |



lot
40

BELL M SWEET TOOTH 10H

483247 Polled January 29, 2020 roan

JT Trans X 28X X - red

Saskvalley Eighteen Wheeler X - roan

Saskvalley Mistress 65C X - roan

DF Pure Gold 3N X - roan

ACC Candy's Floss 43F X - white

ACC Candy's Winegum 14W X - roan

BW: 86 205-Day Wt: 554 365-Day Wt: 999 F.S. 5.2

REA: 10.45 FT: 0.23 IMF: 2.379 RF: 0.246 LY: 61.62

We bought Sweet Tooth's mother out of the Agribition Sale two years ago and she left us with this beautiful redneck roan bull calf. These Eighteen Wheeler sons should all work on hiefers.

| CE | BW | WW | YW | M | \$CEZ | \$BMI | \$F |
|----|-----|----|----|----|-------|--------|-------|
| 14 | 0.5 | 42 | 66 | 24 | 47.60 | 118.07 | 47.99 |



^{lot}
41

BELL M DOMINANCE 12H

484166 Polled January 30, 2020 Roan

JT Trans X 28X X - red

Saskvalley Eighteen Wheeler X - roan

Saskvalley Mistress 65C X - roan

Bell M Foreman 30A X - white

Bell M Brooks Binnie 108F X - roan

Bell M Brooks Binnie 95C X - red

BW: 88 205-Day Wt: 556 365-Day Wt: 1106 F.S. 5.2

REA: 9.04 FT: 0.23 IMF: 3.106 RF: 0.305 LY: 60.61

Here is long bodied Wheeler bull that is mothered by a very eye appealing and structurally perfect Foreman daughter.

| CE | BW | WW | YW | M | \$CEZ | \$BMI | \$F |
|----|------|----|----|----|-------|--------|-------|
| 14 | -0.6 | 41 | 63 | 22 | 50.16 | 120.71 | 49.15 |



^{lot}
42

BELL M HENRIK 23H

483238 Polled February 9, 2020 roan

JT Trans X 28X X - red

Saskvalley Eighteen Wheeler X - roan

Saskvalley Mistress 65C X - roan

Bell M Foreman 30A X - white

Bell M Ella 153F X - roan

Bell M Ella 52W X - red

BW: 74 205-Day Wt: 509 365-Day Wt: 957 F.S. 5.7

REA: 10.00 FT: 0.23 IMF: 3.056 RF: 0.300 LY: 61.43

23H is an eye appealing light birth weight bull that carries high ratio ultrasound numbers. Note his calving ease EPD's are in top 5% or better within the breed.

| CE | BW | WW | YW | M | \$CEZ | \$BMI | \$F |
|----|------|----|----|----|-------|--------|-------|
| 15 | -1.5 | 34 | 47 | 22 | 56.62 | 120.94 | 44.94 |



^{lot}
43

BELL M ASICS 5H

483277 Polled January 25, 2020 Roan

Bell M Cornucopia 154B X - white

Bell M Skechers 87D X - roan

Bell M Sally 105W X - red

Bell M Visionary 127Y X - roan

Bell M Crocus 20F X - white

ACC Crocus 43Y X - roan

BW: 78 205-Day Wt: 508 365-Day Wt: 990 F.S. 4.5

REA: 10.33 FT: 0.2 IMF: 1.801 RF: 0.244 LY: 62.27

5H's dam is a full sister to Bell M Detail 130A, who breeds longevity. Skechers and his sons are bulls that work well on hieifers.

| CE | BW | WW | YW | M | \$CEZ | \$BMI | \$F |
|----|-----|----|----|----|-------|--------|-------|
| 13 | 0.2 | 38 | 54 | 29 | 46.28 | 127.48 | 46.63 |



^{lot}
44

BELL M CONVERSE 13H

*27748 98.6% Polled January 31, 2020 Red

Bell M Cornucopia 154B X - white

Bell M Skechers 87D X - roan

Bell M Sally 105W X - red

HC Free Spirit 6Y X - roan

Bell M Picture Perfect 179F X - red

HC Picture Perfect 34B X - red

BW: 72 205-Day Wt: 601 365-Day Wt: 1054 F.S. 4.5

REA: 8.77 FT: 0.33 IMF: 3.058 RF: 0.418 LY: 57.97

Fat thickness, Intramuscular Fat and Rump Fat all boast ratio's of 119.0 or higher. Converse 13H goes back to a big bodied cow we purchased out of Horseshoe Creek's Herd Reduction Sale. Converse is an all-round eye catching, moderate bull.

| CE | BW | WW | YW | M | \$CEZ | \$BMI | \$F |
|----|-----|----|----|----|-------|--------|-------|
| 10 | 0.7 | 49 | 70 | 27 | 36.05 | 130.40 | 50.18 |



lot
45

BELL M AIR JORDAN 70H

483288 Polled March 5, 2020 Roan

Bell M Cornucopia 154B X - white

Bell M Skechers 87D X - roan

Bell M Sally 105W X - red

Saskvalley Imagine 65X X - red

Uphill Princess 9A X - red

Uphill Princess 23T X - red

BW: 87 205-Day Wt: 624 365-Day Wt: 1087 F.S. 5.6

REA: 10.83 FT: 0.38 IMF: 1.784 RF: 0.332 LY: 58.89

Air Jordan is the type of bull that you want breed everything to. He carries a wide top with an immense depth of rib. Maternal Brother to Bell M Princess Charlotte, the dam of Emperor (lot 35). Has a 137.0 ratio in back fat and 114 ratio in Weaning Weight. Will have genomic enhanced EPD's (GGP 100K) by sale day.

| CE | BW | WW | YW | M | \$CEZ | \$BMI | \$F |
|----|-----|----|----|----|-------|--------|-------|
| 12 | 1.0 | 43 | 62 | 25 | 42.33 | 127.72 | 48.57 |



lot
46

BELL M NIKE 80H

483253 Polled March 8, 2020 Roan

Bell M Cornucopia 154B X - white

Bell M Skechers 87D X - roan

Bell M Sally 105W X - red

JSF Top Hand 34R X - roan

Bell M Joyous Jade 67A X - roan

Bell M Joyous Jade 79T - red

BW: 96 205-Day Wt: 589 365-Day Wt: 948 F.S. 5.7

REA: 8.84 FT: 0.32 IMF: 4.126 RF: 0.393 LY: 58.89

These Skechers sons are all paternal brothers to Bell M Titanium 47F, a bull that is breeding extremely well for George LaClare. 80H is super quiet and has a marbling ratio of 162.

| CE | BW | WW | YW | M | \$CEZ | \$BMI | \$F |
|----|-----|----|----|----|-------|--------|-------|
| 11 | 0.8 | 40 | 56 | 30 | 39.87 | 129.34 | 47.43 |



^{lot}
47

BELL M REBELLION 27H

483274 Polled February 14, 2020 White

Bell M Visionary 127Y X - roan

Bell M Detail 130A X - roan

ACC Crocus 43Y X - roan

Lehne Trophy 38Y X - red

Bell M Misty 175D X - roan

Bell M Misty 61T X - roan

BW: 98 205-Day Wt: 568 365-Day Wt: 949 F.S. 5.3

REA: 10.75 FT: 0.26 IMF: 1.780 RF: 0.385 LY: 61.45

A Direct son of Bell M Detail, out of a no miss Misty cow who is ranked at the top of the herd. This is the product of using two influential pedigrees that just flat out work. One needs to appreciate the soundness, structural correctness, and natural thickness he possesses. Don't shy away from him being white, good bulls come in all colours. So be a rebel, breed your black cows for blues. He could be the start of your Rebellion!

| CE | BW | WW | YW | M | \$CEZ | \$BMI | \$F |
|----|-----|----|----|----|-------|--------|-------|
| 5 | 5.2 | 56 | 81 | 29 | 16.88 | 127.38 | 54.90 |



^{lot}
48

BELL M BULLSEYE 42H

483256 Polled February 22, 2020 Red

Eloora Winchester E17 X - red

Sprys On Target H189 X - red

Sprys Superstars maid D014 X - red

Lehne Trophy 38Y X - roan

Bell M Vera 79C X - rwm

Bell M Piston's Vera 36X X - rwm

BW: 98 205-Day Wt: 549 365-Day Wt: 1007 F.S. 6.2

REA: 12.05 FT: 0.18 IMF: 2.521 RF: 0.215 LY: 64.49

Hey, Hey!! Different pedigree here. On Target worked well for us, we have several daughters in the herd that are producing very well. He is right on the mark with extra muscle and mass. The Vera line never miss on production.

| CE | BW | WW | YW | M | \$CEZ | \$BMI | \$F |
|----|-----|----|----|----|-------|--------|-------|
| 5 | 4.8 | 58 | 84 | 26 | 14.17 | 124.26 | 55.72 |



^{lot}
49

BELL M ENERGIZER 111H

483262 Polled March 17, 2020 Red

Muridale Seal 23W X - roan

Saskvalley Bongo 115B X - roan

Saskvalley Brenda 75Y X - red

Bell M Martin 11Y X - rwm

Bell M Merry Maid 106C X - rwm

Bell M Merry Maid 100Z X - rwm

BW: 90 205-Day Wt: 549 365-Day Wt: 1017 F.S. 5.9

REA: 10.96 FT: 0.31 IMF: 2.446 RF: 0.344 LY: 60.82

One of the last Bongo son's to sell. 111H is backed by the Merry Maid cow family with a shot of Bell M Martin, cow producer extraordinaire.

| CE | BW | WW | YW | M | \$CEZ | \$BMI | \$F |
|----|-----|----|----|----|-------|--------|-------|
| 10 | 2.6 | 48 | 83 | 21 | 31.07 | 109.54 | 52.79 |



^{lot}
50

BELL M MAGNUM 113H

483259 Polled March 18, 2020 Red

Bell M Foreman 30A X - white

Bell M Calibre 130E X - roan

Bell M Madonna 103W X - red

Bell M Forty Five Below 3W X - red

Bell M Merry Maid 100Z X - rwm

Bell M Merry Maid 60R X - red

BW: 100 205-Day Wt: 568 365-Day Wt: 1004 F.S. 5.8

REA: 10.80 FT: 0.32 IMF: 3.381 RF: 0.288 LY: 60.68

Foreman grandson that is real smooth made, and longer than a rope.

| CE | BW | WW | YW | M | \$CEZ | \$BMI | \$F |
|----|-----|----|----|----|-------|--------|-------|
| 6 | 4.5 | 52 | 78 | 24 | 21.13 | 122.95 | 54.35 |

MURIDALE SHORTHORNS

The Muri's, Swift Current, SK

Muridale Shorthorns is located south east of Swift Current, Saskatchewan near a community called Hallonquist. The Muri farm was homesteaded in 1910 and started registering their Shorthorn cattle in 1927. The fifth generation is actively involved in the selection of genetics from proven cow lines that have been part of Muridale Shorthorns from the beginning and develop cattle to fit into today's needs. We run approximately 188 Purebred Shorthorns and 150 commercial cows. Our commercial cows are mostly Shorthorn cross. We raise our Shorthorns to work in cow calf operations that are commercial cattle oriented. We recognize the value the Shorthorn breed can offer to the beef industry, and the desirable traits that are needed to be selected for that work in our environment: calving ease, wean a heavy calf, no udder problems, and mature to a moderate weight. Our bulls that we developed are selected for these quality traits, and selected from a cow herd that's easy fleshing, moderate frame, just good functional cows. The bulls we are offering in the Who's Your Daddy Sale are genotyped and tested free for myostatin. We stand 100% behind our cattle, we believe in keeping our customers happy.

-Muridale Shorthorns



^{lot}
51

MURIDALE RANK 5G ET

482462 Polled March 17, 2019 Red

Eionmor Ideal 69F X - roan

Muridale Buster 14K X - roan

Muridale Robin 57G X - red

Saskvalley Bonanza 219M X - roan

Muridale Prairie 47T - red

Muridale Prairie 16P - red

BW: 94 205-Day Wt: 627 365-Day Wt: 1018 F.S. 4.9

This maternal power house E.T bull has been a stand out since day one. With a stacked pedigree including Buster, Bonanza, and Ultimate who have really shaped our herd to what it is today.

Rank 5G combines all those traits into a perfect package. He is a full sibling to Jaxson who has worked great for many herds across North America. We think so highly of the genetic potential of this bull, we threw him out with the top end of our cows last summer and he should have calves on the ground by sale day.

| CE | BW | WW | YW | M | \$CEZ | \$BMI | \$F |
|----|-----|----|----|----|-------|--------|-------|
| 9 | 0.2 | 42 | 63 | 25 | 31.38 | 119.05 | 49.37 |



lot
52

MURIDALE ULTRA LAD 20G

482468 Polled March 27, 2019 Roan

Butterfield Ultramarine X - roan

Eionmor Ultra 8C X - red

Eionmor Mochican Beauty 103Z X - red

Cumberland Gay Lad X - roan

Muridale White Jay 3Y X - white

Muridale Blue Jay 19N X - roan

BW: 104 205-Day Wt: 646 365-Day Wt: 1054 F.S. 5.9

Muridale Ultra Lad 20G has a very interesting pedigree with his sire being born in the 90's and his maternal grandfather being born in the 60's. His maternal sister was Reserve Grand Champion female at the last Agribition. He is a very long bull with great feet and large testicles.



| CE | BW | WW | YW | M | \$CEZ | \$BMI | \$F |
|----|-----|----|----|----|-------|--------|-------|
| 11 | 2.7 | 44 | 68 | 22 | 38.14 | 105.57 | 48.05 |



lot
53

MURIDALE IRON 22G

482470 Polled March 28, 2019 Roan

Bonnyview Hero 7Z X - roan

Muridale Iron Man 4X X - roan

Muridale Molinari 8P X - red

Alta Cedar Ultimate 130K - red

Muridale Mocha 57W X - roan

Muridale Mocha 37S X - roan

BW: 84 205-Day Wt: 500 365-Day Wt: 947 F.S. 5.1

Iron 22G has good thickness with lots of capacity. He is a full brother to Muridale Raw Hide 6E who was a top seller in the bull sale a couple years ago and sold to Warner's in Wyoming. His sire also sired Muridale Phantom 10F who sold to Anwender's and Semex who are marketing semen world wide.



| CE | BW | WW | YW | M | \$CEZ | \$BMI | \$F |
|----|------|----|----|----|-------|--------|-------|
| 17 | -1.5 | 34 | 58 | 22 | 59.59 | 107.61 | 44.50 |



lot
54

MURIDALE PROMO 25G

482471 Polled March 28, 2019 Roan

Saskvalley Ultra 12J X - roan

Saskvalley Primo 40P X - roan

Saskvalley Patsy 250M X - rwm

Saskvalley Bonanza 219M X - roan

Muridale SB Jenny 58Z X - red

Muridale Jeaney 8T X - roan

BW: 93 205-Day Wt: 631 365-Day Wt: 1000 F.S. 5.8

Muridale Promo 25G. A bull with good depth and thickness. His dam is a very deep easy keeping Bonanza daughter.



| CE | BW | WW | YW | M | \$CEZ | \$BMI | \$F |
|----|-----|----|----|----|-------|--------|-------|
| 8 | 3.3 | 51 | 77 | 27 | 26.73 | 111.11 | 50.80 |



lot
55

MURIDALE WALKER 72G

482496 Polled April 11, 2019 Roan

Balmoral Oaks Eagle 9X X - roan

Muridale White Lightning 4E X - white

Muridale Penny 10S X - roan

Coalpit Creek Leader 6th X - red

Muridale CP Mocha 5A X - red

Muridale Mocha 37S X - roan

BW: 97 205-Day Wt: 706 365-Day Wt: 1112 F.S. 5.6

A very long bull out a good producing Coalpit cow.



| CE | BW | WW | YW | M | \$CEZ | \$BMI | \$F |
|----|------|----|----|----|-------|--------|-------|
| 14 | -0.4 | 40 | 66 | 29 | 47.12 | 124.93 | 49.73 |



lot
56

MURIDALE STARBUCK 79G

482499 Polled April 14, 2019 Red

Saskvalley Bonanza 219M X - roan

Muridale Robert 35U X - red

Muridale Robby 12P - red

Eionmor Highlander 84W X - red

Muridale Jeany 46Y X - roan

Muridale Jeaney 8T X - roan

BW: 103 205-Day Wt: 636 365-Day Wt: 1042 F.S. 5.7

One of the last natural sons of Robert to sell. A long bull with some good performance.



| CE | BW | WW | YW | M | \$CEZ | \$BMI | \$F |
|----|-----|----|----|----|-------|--------|-------|
| 8 | 2.7 | 43 | 70 | 24 | 27.95 | 100.06 | 48.83 |



Dam



lot
57

MURIDALE LOONIE 84G

482502 Polled April 16, 2019 Roan

Saskvalley Bonanza 219M X - roan

Muridale Robert 35U X - red

Muridale Robby 12P - red

Muridale Jaxson 4A X - red

Muridale Goose 27D X - roan

Muridale Goose 76Y X - roan

BW: 84 205-Day Wt: 540 365-Day Wt: 946 F.S. 4.9

Fancy roan Robert son who has a moderate birthweight. Dam is a maternal sister to Phantom who is owned by Semex and the Anwender Cattle Company. Being from the Goose cow family you know this bull has Maternal writing all over him.



| CE | BW | WW | YW | M | \$CEZ | \$BMI | \$F |
|----|------|----|----|----|-------|--------|-------|
| 13 | -0.5 | 40 | 66 | 23 | 45.53 | 113.14 | 48.09 |



^{lot}
58

MURIDALE LANDMARK 89G

482506 Polled April 20, 2019 Roan

DMH Cherry Fillet ET - red

Studer's Die Hard 58D X - red

DSF Annie 84B X - roan

Saskvalley Bonanza 219M X - roan

Muridale Prairie Rose 108Y X - roan

Muridale Prairie Rose 25T X - red

BW: 89 205-Day Wt: 549 365-Day Wt: 948 F.S. 4.9

This pretty roan, deep gutted son of Die Hard was used on a group of blue roan and black heifers this year.



| CE | BW | WW | YW | M | \$CEZ | \$BMI | \$F |
|----|------|----|----|----|-------|--------|-------|
| 16 | -1.2 | 35 | 58 | 24 | 58.14 | 112.01 | 44.60 |



^{lot}
59

MURIDALE KONCRETE 96G

482511 Polled April 27, 2019 White

Balmoral Oaks Eagle 9X X - roan

Muridale White Lightning 4E X - white

Muridale Penny 10S X - roan

Muridale Jaxson 4A X - red

Muridale Jenna 34D X - roan

Muridale Jeany 46Y X - roan

BW: 90 205-Day Wt: 604 365-Day Wt: 982 F.S. 4.4

A solid chunk of a bull here. His dam is one of our best Muridale Jaxson 4A daughters, with a very nice udder.



| CE | BW | WW | YW | M | \$CEZ | \$BMI | \$F |
|----|-----|----|----|----|-------|--------|-------|
| 9 | 0.9 | 36 | 60 | 25 | 33.02 | 102.98 | 45.70 |



lot
60

MURIDALE BALTO 101G

482514 Polled April 30, 2019 Roan

Balmoral Oaks Eagle 9X X - roan

Muridale White Lightning 4E X - white

Muridale Penny 10S X - roan

Saskvalley Tradition 106T X - red

Muridale Jay 53A X - red

Muridale jay 35S - roan

BW: 97 205-Day Wt: 657 365-Day Wt: 1052 F.S. 5.7

If your looking for a White Lightning son with a little more growth without sacrificing maternal traits, Balto is the bull for you. Out of a great Saskvalley Tradition daughter who has some longevity behind her.



| CE | BW | WW | YW | M | \$CEZ | \$BMI | \$F |
|----|-----|----|----|----|-------|--------|-------|
| 10 | 1.8 | 44 | 64 | 31 | 33.87 | 126.57 | 51.09 |



lot
61

MURIDALE WILKINSON 112G

482522 Polled May 14, 2019 Red

DMH Cherry Fillet ET - red

Studer's Die Hard 58D X - red

DFS Annie 84B X - roan

Saskvalley Tradition 106T X - red

Muridale Mocha 41X X - red

Muridale Mocha 37S X - roan

BW: 75 205-Day Wt: 564 365-Day Wt: 897 F.S. 4.4

This Studer Die Hard son has lots of capacity with some softness to him . He should work on heifers. His dam is a very good producing Saskvalley Tradition daughter.



| CE | BW | WW | YW | M | \$CEZ | \$BMI | \$F |
|----|------|----|----|----|-------|--------|-------|
| 21 | -3.0 | 34 | 58 | 28 | 72.95 | 126.90 | 44.64 |



lot
62

MURIDALE THUNDER 113G

482523 Polled May 15, 2019 Roan

Balmoral Oaks Eagle 9X X - roan

Muridale White Lightning 4E X - white

Muridale Penny 10S X - roan

Muridale Buster 2nd 76P X - red

Muridale Secret 12W X - rwm

Muridale Secret 72T X - rwm

BW: 92 205-Day Wt: 593 365-Day Wt: 958 F.S. 5.0

Thunder is a well balanced bull and should work on heifers. His dam also produced Muridale Skoll 38Y that was sold to Warner's in Wyoming.



| CE | BW | WW | YW | M | \$CEZ | \$BMI | \$F |
|----|------|----|----|----|-------|--------|-------|
| 12 | -0.3 | 37 | 55 | 28 | 43.37 | 120.91 | 47.11 |



lot
63

MURIDALE GAINER 302G

482673 Polled March 25, 2019 Red

Muridale Iron Man 4X X - roan

Muridale Raw Hide 6E X - red

Muridale Mocha 57W X - red

Muridale Johnny 22X X - roan

Muridale Willow 96Z X - roan

Muridale Willow 43X X - red

BW: 68 205-Day Wt: 632 365-Day Wt: 948 F.S. 5.1

A light birth weight bull we used on purebred heifers. This bull has thickness with calving ease. The combination of Muridale Raw Hide 6E and a powerful dam that is noted for early gestation, stamps Herd Sire all over him. His dam always gives light birth weight calves that are one of the heaviest at weaning.



| CE | BW | WW | YW | M | \$CEZ | \$BMI | \$F |
|----|------|----|----|----|-------|--------|-------|
| 20 | -1.9 | 41 | 61 | 27 | 69.87 | 143.92 | 50.56 |



lot 64 MURIDALE GUTS & GLORY 314G

482671 Polled April 10, 2019 Red

Six S Wyoming 41W X - roan

Six S Zipper 25Z X - roan

Six S Romaine 46R X - roan

Saskvalley Bonanza 219M X - roan

Muridale Sissy 71Z - red

Muridale Jessie 86T - red

BW: 83 205-Day Wt: 640 365-Day Wt: 1016 F.S. 5.9

Like his name implies, he carries a lot of body depth. Just like his Saskvalley Bonanza dam. He will follow the footsteps of Bonanza and sire easy fleshing cattle. Sold a full bother to Hart Lowerberger.



| CE | BW | WW | YW | M | \$CEZ | \$BMI | \$F |
|----|-----|----|----|----|-------|--------|-------|
| 12 | 1.4 | 49 | 78 | 26 | 40.15 | 123.00 | 50.38 |



lot 65 MURIDALE GENKO 322G

482722 Polled April 15, 2019 Roan

Muridale Iron Man 4X X - roan

Muridale Raw Hide 6E X - red

Muridale Mocha 57W X - roan

Muridale Buster 14K X - roan

Muridale Sasha 15B X - roan

Muridale Sasha 61P X - red

BW: 87 205-Day Wt: 664 365-Day Wt: 1044 F.S. 5.5

A masculine, long, stout bull with lighter birth weight and performance. His dam is an impressive Muridale Buster 14K daughter, she works hard and not hard on herself with a nice udder.



| CE | BW | WW | YW | M | \$CEZ | \$BMI | \$F |
|----|-----|----|----|----|-------|--------|-------|
| 12 | 0.3 | 49 | 77 | 22 | 38.40 | 120.37 | 51.77 |



lot
66

MURIDALE GRAPHITE 328G

482708 Polled June 4, 2019 Red

Muridale Iron Man 4X X - roan

Muridale Raw Hide 6E X - red

Muridale Mocha 57W X - red

Muridale Robert 35U X - red

Muridale Sasha 306E X - red

Muridale Sasha 61P X - red

BW: 78 205-Day Wt: 688 365-Day Wt: 1098 F.S. 4.8

Another low-birth-weight bull sired by Muridale RawHide 6E. This guy is good. Wide over the top, deep in the chest. He was born in June, out of a 1st calf heifer. His dam will develop to be one of the best in the herd.



| CE | BW | WW | YW | M | \$CEZ | \$BMI | \$F |
|----|-----|----|----|----|-------|--------|-------|
| 13 | 0.6 | 44 | 71 | 25 | 45.60 | 118.75 | 50.94 |



Dam



lot
67

MURIDALE THERMAL ENERGY 15A

477341 Polled March 27, 2013 Red

Saskvalley Roughneck 154R X - red

Saskvalley tradition 106T X - red

grand dam X - roan

Saskvalley Bonanza 219M X - roan

Muridale Goose 32R X - roan

Muridale Swan 54N X - white

BW: 85 205-Day Wt: 648 365-Day Wt: 1099

Thermal Energy sold out of the Who's Your Daddy Bull sale for \$28,000. to the Bowman and Gerfen families in the USA. He has gone on to produce very well around the world including these top sellers; Sprys Boom Time M222 (\$38,000), BSG Profitwise 1767 (\$45,000), Sprys Extra Special N61 (\$44,000), Sprys Unlimited P146 (\$37,500). DNA tested Homozygous Polled. Thermal Energy 15A is the number 1 current Shorthorn sire in Australia for the All Purpose Index (API) \$Index at \$161. **Selling 10 straws. Stored at Alta Genetics.**

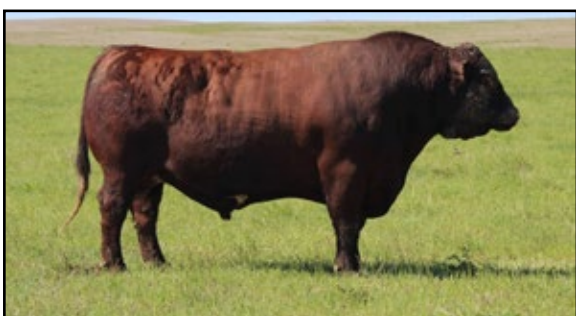


| CE | BW | WW | YW | M | \$CEZ | \$BMI | \$F |
|----|-----|----|----|----|-------|--------|-------|
| 13 | 2.0 | 60 | 93 | 31 | 39.82 | 154.29 | 61.42 |

REFERENCE SIRES



MURIDALE RAW HIDE 6E



MURIDALE ROBERT 35U



STUDER'S DIE HARD 58D

REPLACEMENT FEMALES

We are offering a group of females that are from the heart of the heifer pen. They represent many of our top cow families. In many cases there are either full sisters or maternal sisters in the herd. Take these heifers home and breed them to the bull of your choice and reap for the profits. The delivery program we have in place for the bulls will not be applied to the heifers, but we will assist you with your purchases.



lot
68

BELL M DUCHESS 21H

699300 Polled February 8, 2020 Roan

JT Trans X 28X X - red

Saskvalley Eighteen Wheeler X - roan

Saskvalley Mistress 65C X - roan

Clythe Mane Boomer 11B X - red

Bell M Duchess 32F - roan

Bell M Duchess 12D X - roan

BW: 79 205-Day Wt: 565

111.0 Weaning Weight ratio.

| CE | BW | WW | YW | M | \$CEZ | \$BMI | \$F |
|----|------|----|----|----|-------|--------|-------|
| 15 | -0.7 | 46 | 66 | 25 | 51.65 | 132.91 | 50.12 |



lot
69

BELL M MISTY 45H

699325 Polled February 22, 2020 Red

Bell M Visionary 127Y X - roan

Bell M Detail 130A X - roan

ACC Crocus 43Y X - roan

HC Waterloo 38W X - red

Bell M Misty 6Y X - red

Bell M Misty 61T X - roan

BW: 92 205-Day Wt: 502

3/4 sib to lot 47. Super long bodied and out of the Misty cow family.

| CE | BW | WW | YW | M | \$CEZ | \$BMI | \$F |
|----|-----|----|----|----|-------|--------|-------|
| 8 | 3.5 | 44 | 66 | 28 | 27.24 | 115.78 | 49.86 |



lot
70

BELL M LASSIE 134H

699316 Polled March 24, 2020 Red

Bell M Foreman 30A X - white

Bell M Captain 139D X - roan

Bell M Mysterious Majorette X - red

Glenford Universal 13A X - red

Bell M Lassie 37C X - red

Bell M Lassie 109A X - red

BW: 103 205-Day Wt: 477

Solid red Capatain that is going to make a great cow.

| CE | BW | WW | YW | M | \$CEZ | \$BMI | \$F |
|----|-----|----|----|----|-------|--------|-------|
| 7 | 4.1 | 55 | 83 | 27 | 21.39 | 126.67 | 55.52 |



lot
71

BELL M TALCOTT JOYFUL 14H

699317 Polled February 1, 2020 Roan

JT Trans X 28X X - red

Saskvalley Eighteen Wheeler X - roan

Saskvalley Mistress 65C X - roan

Bell M Skechers 87D X - roan

Bell M Talcott Joyful 39F - roan

Bell M Talcott Joyful 6B X - red

BW: 86 205-Day Wt: 553

Same cow family as lot 28.

| CE | BW | WW | YW | M | \$CEZ | \$BMI | \$F |
|----|------|----|----|----|-------|--------|-------|
| 16 | -1.3 | 39 | 54 | 25 | 57.25 | 129.64 | 47.02 |



^{lot}
72

BELL M SALLY 114H

*27742 93.8% Polled March 18, 2020 White

JSF Wall Street 106C ET X - red

JSF Wall Street 70E X - roan

JSF Marigold Maria 41B X - roan

Bell M Foreman 30A X - white

Bell M Sally 57E X - roan

Bell M Sally 98Z X - red

BW: 80 205-Day Wt: 557

Showstopping Wall Street Foreman combination. Lots of red pigmentation. Full sister sold to Irl Smith last year.

| CE | BW | WW | YW | M | \$CEZ | \$BMI | \$F |
|----|-----|----|----|----|-------|--------|-------|
| 14 | 0.6 | 47 | 72 | 30 | 48.09 | 143.11 | 52.98 |



^{lot}
73

BELL M FLOWER 102H

699338 Polled March 14, 2020 Roan

Bell M Martin 11Y X - rwm

Bell M Eli 140E X - rwm

River Acres Cathy Joyful 8A X - rwm

River Acres Mist 2W X - rwm

River Acres Flower 15B X - white

River Acres Flower 20X X - roan

BW: 88 205-Day Wt: 551

First progeny sired by our Eli bull to sell. Super maternal.

| CE | BW | WW | YW | M | \$CEZ | \$BMI | \$F |
|----|-----|----|----|----|-------|--------|-------|
| 10 | 2.6 | 49 | 73 | 23 | 32.40 | 123.41 | 50.61 |

REFERENCE SIRES



BELL M CAPTAIN 139D



BELL M SKECHERS 87D



SASKVALLEY EIGHTEEN WHEELER 94E



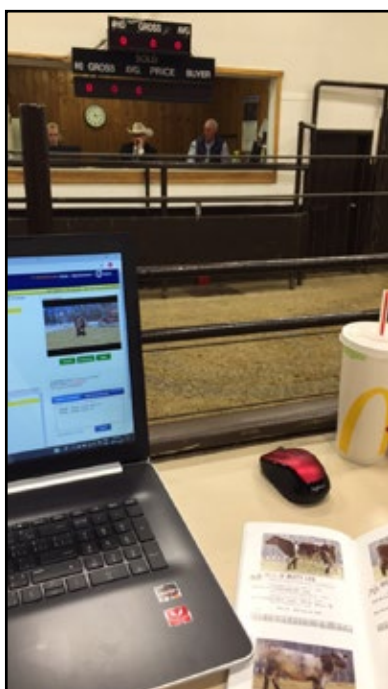
ACCOMMODATIONS

Best Western Blairmore Hotel

Saskatoon, SK

1-306-242-2299

When booking ask for the S.L.S. rate



A look back at 2020 Bull Sale.

VIDEOS

Videos can be found on each consigner's Facebook page. Alternatively they can be found by searching 18th Annual Who's Your Daddy Bull Sale Playlist on YouTube.

VISIT THE CANADIAN SHORTHORN REGISTRY FOR UP TO DATE EPD'S, PERFORMANCE RATIO'S AND EXTENDED PEDIGREE.

Enter: www.csa.digitalbeef.com.



Animal Search

Search For
Bulls ☐ Both ☒ Females ☐

Search Field
Reg # ☒ Tattoo ☐ Name ☐ EID ☐

Search Value
use an asterisk (*) as a wildcard
483288

Search for Reg No

Enter the registration number
of a specific bull. Click the
search button.

Click on the registration number to bring up the
animal's information.

| 1 Animals Matched Your Criteria | | | |
|---------------------------------|-----------------|-----------------------|------------|
| Registration # | Prefix / Tattoo | Name | Birthdate |
| X-ICANT1983288 | ROY 70H | BELL M ADR JORDAN 70H | 05/03/2020 |

HASSLE FREE EXPORT PROGRAM

When you buy a bull from the Who's Your Daddy Sale we guarantee that bull is exportable to the USA or you get your money back. We will arrange and pay for all vet testing and brokerage fees and deliver your bull to the border. We will also work with you to arrange any further trucking that is needed. There is a \$300 surcharge for this service but it guarantees you get your bull with zero headache or inconvenience.

MORE FOR YOUR DOLLAR

*At the time of printing United States Dollar
holds a 20% premium over the Canadian Dollar
\$1000.00 Canadian = \$800.00 US*

SAVE \$100.00

*Bring your trailer to the sale and get
\$100.00 off per animal you bring home.*

EPDs

Calving Ease (CE) Listed as a percentage of unassisted calvings. A higher CED EPD predicts a sire that will have a higher percentage of unassisted calves.

Birth Weight (BW) At the basic level, birth weight is nothing more than an indicator trait for calving ease, but the emphasis on birth weight can be overdone. Economically, over selecting for low birth weights can take us in the wrong direction; cattle still sell by the pound. Use BW EPD in conjunction with calving ease. Phenotypic traits like length of body, shoulder design, head shape, circumference of bone and even frame score play a significant role in determining birth weights and calving ease.

Weaning Weights (WW) Put simply, weaning weight is the ability of a bull's calf to dry off, stagger to its feet, and grow like mad. Finding a sire with a strong WW that also excels in other economically relevant traits important to your breeding program is a key element to success.

Yearling Weight (YW) This trait is economically important since it is more indicative of growth potential through market weights taken early in the animals life. Single trait selection for YW can lead to serious problems that can affect bottom line profit. Mature must be monitored when selecting a bull for performance via YW EPD. Cow maintenance costs, calving difficulty, and even breeding problems can result. YW EPDs can be very influential if you understand your environment conditions or if you are retaining ownership in your calves from birth to slaughter.

Milk (M) A bull's Milk EPD is determined by his daughter's ability to wean heavier calves than her contemporaries. Just because a cow weans a heavier calf each year does not necessarily mean her Milk EPD should be the highest in the herd. The performance of her calf can also be attributed to the dam's or sire's growth genetics or a number of environmental factors. Milk EPDs can be too high for your environmental conditions especially in severe environmental conditions and can have a negative impact on rebreeding rates.

\$Value Indexes

\$ CEZ – (\$ Calving Ease) This index assumes a bull will only be mated to heifers, not cows. The potential profitability of the sire is measured by the incidence of live calves at birth. Moderate mature size is also emphasized in the index., but performance is not a priority. This index is also a good measure of Shorthorn females' ability to produce calving ease sires. Overemphasis of \$CEZ may cause unwanted depression of weaning and yearling performance

\$BMI – (\$ British Maternal Index) As the name implies, this multi-trait selection index attempts to measure a bull's potential profitability when complimenting the British cow base (Angus, Red Angus, Hereford, etc.). Shorthorn females can likewise be gauged at adding value to British or British-composite bulls of other breeds. A balance of growth and carcass traits is desired with a strong maternal component aimed at optimum reproductive efficiency and cow longevity.

\$F – (\$ Feedlot) Similar to a Terminal Sire scenario, \$Feedlot places strong emphasis on growth and carcass traits. This multi-trait index assumes the sire will be mated to a mix of heifers and cows and attempts to measure profitability when progeny are sold on the fed market. On the female side, mature size should be monitored closely when selecting for \$F. Over-selection may cause detrimental harm to longevity, reproductive efficiency, and fleshing ability.

Ultrasound Definitions

Ribeye Area (REA) Area of the longissimus muscle, measured in square inches. The trait is moderately to highly heritable and gives an indication of overall carcass muscling.

Fat Thickness (FT) An external fat measurement taken between the 12th and 13th ribs, measured in inches.

Rump Fat (RF) An external measurement taken between the hooks and pins, measured in inches. The rump fat and the rib fat measurements are used to determine the overall external body fat.

Intramuscular Fat (%IMF) Percentage of fat in the ribeye area muscle (similar to marbling). The field technician collects four images and the values generated by the interpreting software are averaged for an overall %IMF. Marbling directly contributes to beef palatability.

Lean Yield (LY) Percentage of muscle in the carcass.



Genomic-enhanced EPD (GE-EPD) are valuable because they utilize genomic test results in addition to pedigree, performance and progeny data for increased reliability of an animal's EPD

Non-Parent EPD Average (As of Feb. 16, 2021)

| CE | BW | WW | YW | M | \$CEZ | \$BMI | \$F |
|----|-----|----|----|----|-------|--------|-------|
| 9 | 2.4 | 46 | 72 | 24 | 30.73 | 115.96 | 50.33 |



— Denotes top 25% of the Shorthorn Breed EPD's.

Terms & Conditions

Location: The sale will be held at Saskatoon Livestock Sales (5 miles west of Saskatoon on Hwy 14).

Date & Time: Thursday April 1, 2021

Air Travel: Saskatoon Airport is serviced by all major airlines, check with your travel agent for further details. We will be happy to look after you but please give us sufficient time if you require assistance.

Sale Day Phone: (306) 382-8088

Terms: Terms of the sale are cash or cheque, payable at par at the sale location. The right of property shall not pass until after settlement has been made; no invoicing on buyers in attendance, unless previous arrangements have been made. Every animal sells to the highest bidder and in cases of disputes, the auctioneer's decision will be final. Announcements from the auction block will take precedence over the information in the catalogue. All monies are in Canadian funds.

Mail, Phone or Wire Bids: Bidders unable to attend the sale may phone, wire or mail their bids and instructions to the sale manager, auctioneer or special representatives. Bids must be received in sufficient time prior to the sale.

Breeding Information: All cattle of breeding age are guaranteed to be breeders. All calthood vaccinates are noted in the catalogue. Any export tests will be arranged after the sale, at the seller's expense. The standard guarantee as endorsed by the Canadian Shorthorn Association will apply.

TH Status: All sale lots have been tested and are TH Free or declared TH Free by pedigree.

Pedigrees: The Canadian Shorthorn Association certificate of registration will be furnished with each animal sold, including calves by side of dam, duly transferred to the purchaser after payment has been made. Proper instructions must be provided at the conclusion of the sale. Extensions granted on order bids only. Costs incurred due to incorrect transfer will be borne by the purchaser.

Insurance: Agents will be in attendance to insure your purchases. We strongly recommend that insurance is purchased for full value.

Delivery: Every assistance will be given in arranging the shipping and delivery of your purchases. Each animal becomes the risk of the purchaser as soon as sold.

Errors: All announcements at sale time, written or oral, supersede any written material in the catalogue.

Liabilities: Who's Your Daddy, their consignors, sale staff and representatives accept no responsibility for any accidents that occur. All persons attend the sale at their own risk.

Notes:

Who's Your Daddy

Box 47

Englefeld, SK

S0K 1N0

Catalogue designed by: Royce Moellenbeck